

*Slant/Fin*

# XL-2000

CAST-IRON OIL-FIRED BOILER

The lean,  
clean,  
heating  
machine.



Superb home heating  
under a wide range of  
operating conditions.

- Swing-out / removable burner door provides easy access through extra-large opening to entire combustion chamber.
- Dedicated, by design, to hot water heating only. (No "extra baggage".)
- Superior combustion, cleaner performance, outstanding economy.
- Low mass design. Quicker heat-up. Quicker recovery of domestic hot water when connected to indirect-fired storage water heater.
- Easier to clean flue passages.
- The economy-priced choice for today's oil-fired boiler applications.
- From 0.65 to 2.00 GPH No. 2 oil input.

**XL-2000**  
CAST-IRON OIL-FIRED BOILER

**Slant/Fin XL-2000** oil-fired boiler.  
Lower fuel costs.  
More dependable service.



**Computer-designed for economy and durability.**

The high-efficiency XL-2000 oil-fired boiler is computer-designed to reduce your fuel bills and provide years of dependable service.

The unique dome-shaped combustion chamber provides for a better flame under varying conditions, even when the oil is cold. The boiler water heats rapidly sending warmth quickly through your home when you want it.

**Quality assured.**

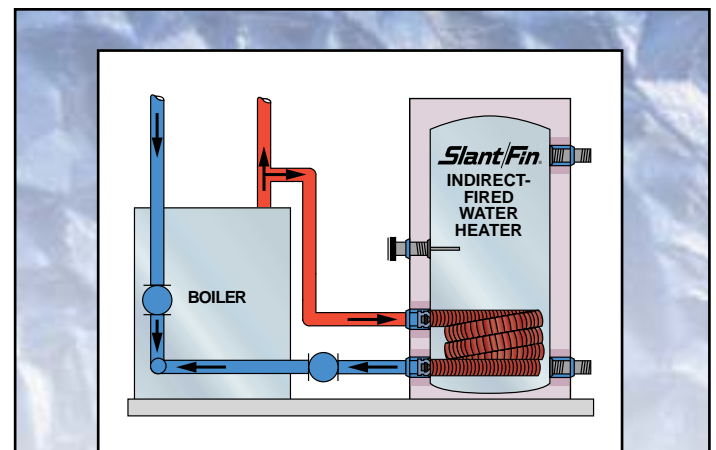
The heat exchanger sections are made of only the finest cast iron. They're then finished to exact specifications on automated high precision machinery. Dependable performance is assured with nationally known brands of burners, circulators and safety controls.

Multiple checks for quality and overall boiler integrity all add to high reliability. Every XL-2000 section, for instance, is tested under pressure of 250 pounds per square inch (psi). Normal residential operating pressure is 12 psi. Repetitive testing—individual sections, assembled heat exchanger and completed boiler — help ensure leak-free integrity.

**Better heat exchanger produces higher efficiency.**

The advanced design of the XL-2000 heat exchanger maximizes the transfer of heat from the burner flame to the water in your heating system. The wet-base, wet-back boiler sections are filled with water, even on the sides, bottom and back

of the combustion area. The flue passage design and thermal pin pattern of the heat exchanger ensure very low draft loss and uniform heat transfer, reducing thermal strain and prolonging the life of the casting. The unobstructed flue path promotes better performance and minimizes soot buildup.



**XL-2000 can provide hot water for your kitchen, bath and laundry.**

For a large reserve of hot water for your family all year long, your installer can provide a Slant/Fin indirect-fired storage water heater that is easily connected to the XL-2000 boiler. These water heaters store between 30 and 80 gallons of hot water. They have built-in heating coils which are connected to your boiler in the same fashion as a heating zone.

# Economy-priced. Installer-friendly. Service-friendly.

## LEAN!

### No "extra baggage"

The XL-2000 by Slant/Fin is the oil boiler which installers and service people are raving about. It's priced lower because it was *designed specifically* as a hot water boiler, without the "extra baggage" of steam and tankless coil requirements.

### Fits through tight spaces. Lighter weight.

During delivery you can lift the door and mounted burner right off the heavy-duty hinge pins so the XL-2000 fits easily through very tight spaces. And you can get it down steps easily because it weighs a lot less than other similar output cast-iron boilers. (See shipping weights on page 4.) For routine service calls, the swing-out door design always ensures full access to the entire combustion area and burner.

### Extra depth for elongated flame.

For better performance the door is dome-shaped to add space to the combustion area. This provides extra depth for the flame when it elongates due to cold air/cold oil conditions. There's no impingement on the fire wall and no decrease in the quality of the flame. Draft loss is extremely low because the XL-2000 heat exchanger is wide but short.

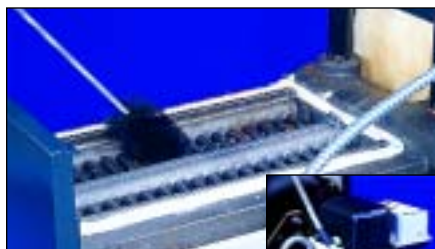
## CLEAN!

### High performance cast-iron heat exchanger

The XL-2000 wet base heat exchanger surrounds a specially contoured combustion area that promotes a symmetrical clean burning flame. Wide, low-profile heat exchanger sections transfer heat evenly with exceptionally low draft loss. It provides good performance under a wider range of operating conditions.

### Easy to maintain for like-new performance.

After removing the top jacket panel and no-cement flue collector, you can clean the *entire* heat exchanger from any position around the boiler without ever trapping your flue brush. The XL-2000 boiler is "service-friendly". Virtually 100% of heat exchanger surfaces are flue brush accessible to maintain the high heat transfer characteristics of the boiler's cast-iron thermal pins. For unobstructed inspection and cleaning, the burner door can swing out and easily lift off, if desired.



*"Service-friendly". Pattern and spacing of thermal pins, permit flue brush to move easily between sections without getting trapped.*



*Equipped with major brand name burner, circulator and controls. Burner, nozzle, end cone combination have been selected and tested to ensure superior performance in a wide variety of conditions.*



*Easier to handle. Door and mounted burner can easily be lifted off.*



### Metal push nipples

All cast-iron boilers are made with multiple sections that are joined together. Slant/Fin uses only metal push nipples that expand and contract with the individual boiler sections that they connect. The rubber gaskets that are substituted for push nipples in many other boilers can deteriorate. This could result in water leaking from the boiler and major repair bills.



### No furnace cement required

Easy-off, easy-on flue collector. Can be quickly and repeatedly removed and put back into place with fiberglass rope seal. Locks positively tight. No furnace cement required. Reduces cleaning time dramatically.

## Slant/Fin XL-2000 THE LEAN, CLEAN, HEATING MACHINE.

- Superb combustion for reliable, efficient home heating.
- Swing-out burner door. Insulation on door and target wall.
- Easy to clean and service.
- Economy priced. Economical to operate.





The lean, clean, heating machine.  
Compact, high efficiency, oil-fired boiler.

## Ratings and Dimensions

All dimensions subject to normal manufacturing tolerance.

BOILER MODEL NO.	I=B=R BURNER CAPACITY OIL INPUT †§		D.O.E. HEATING CAPACITY MBH * WATER	I=B=R WATER NET RATING MBH *	I=B=R CHIMNEY SIZE		AFUE % WATER	BOILER LENGTH "A"	FRONT TO FLUE "B"	FLUE COLLAR DIA. "C"	CIRCULATOR SUPPLY FLANGE "D" NPT	APPROX. OVERALL LENGTH "E"	SHIPPING WEIGHT (lbs.)
	GPH	BTUH			NOM. RECT X HEIGHT ‡ (in x in x ft)	I.D. ROUND X HEIGHT (in x ft)							
XL-20	0.65	91,000	78	68	8 x 8x15	6 x 15	83.56	8 <sup>11</sup> / <sub>16</sub> "	4 <sup>9</sup> / <sub>16</sub> "	6" <sup>¶</sup>	1 <sup>1</sup> / <sub>4</sub> "	25 <sup>3</sup> / <sub>8</sub> "	304
XL-30H	0.85	119,000	104	90	8 x 8x15	6 x 15	86.00						
XL-30	1.00	140,000	121	105	8 x 8x15	6 x 15	85.04	12 <sup>3</sup> / <sub>16</sub> "	6 <sup>5</sup> / <sub>16</sub> "	6"	1 <sup>1</sup> / <sub>4</sub> "	28 <sup>7</sup> / <sub>8</sub> "	382
	1.15	161,000	138	120	8 x 8x15	6 x 15	84.12	12 <sup>3</sup> / <sub>16</sub> "	6 <sup>5</sup> / <sub>16</sub> "	6"	1 <sup>1</sup> / <sub>4</sub> "	28 <sup>7</sup> / <sub>8</sub> "	
XL-40H	1.25	175,000	152	132	8 x 8x15	7 x 15	86.00						
XL-40	1.35	189,000	162	141	8 x 8x15	7 x 15	85.05	15 <sup>11</sup> / <sub>16</sub> "	8 <sup>1</sup> / <sub>16</sub> "	7"	1 <sup>1</sup> / <sub>4</sub> "	32 <sup>3</sup> / <sub>8</sub> "	482
	1.55	217,000	186	162	8 x 8x15	7 x 15	84.38	15 <sup>11</sup> / <sub>16</sub> "	8 <sup>1</sup> / <sub>16</sub> "	7"	1 <sup>1</sup> / <sub>4</sub> "	32 <sup>3</sup> / <sub>8</sub> "	
XL-50	1.80	252,000	217	189	8 x 8x15	8 x 15	85.00	19 <sup>3</sup> / <sub>16</sub> "	9 <sup>13</sup> / <sub>16</sub> "	8"	1 <sup>1</sup> / <sub>2</sub> "	35 <sup>7</sup> / <sub>8</sub> "	538
	2.00	280,000	239	208	8 x 8x15	8 x 15	84.19	19 <sup>3</sup> / <sub>16</sub> "	9 <sup>13</sup> / <sub>16</sub> "	8"	1 <sup>1</sup> / <sub>2</sub> "	35 <sup>7</sup> / <sub>8</sub> "	

Standard working pressure 30 psi.

All boilers hydrostatically tested — A.S.M.E.

\* For forced hot water heating systems where the boiler and all piping are located within the area to be heated, the boiler may be selected on the basis of gross D.O.E. capacity output. The net I=B=R output ratings shown are based on an allowance for piping and pickup of 1.15. D.O.E. heating capacity is divided by the allowance to obtain net rating. The Slant/Fin Technical Service Department should be consulted before selecting a boiler for unusual piping and pick-up requirements such as intermittent system operation, extensive piping, etc.

† Ratings apply to the use of light oil at 140,000 Btu per gallon and apply only with Slant/Fin

supplied burners properly adjusted to produce 13% CO<sub>2</sub>.

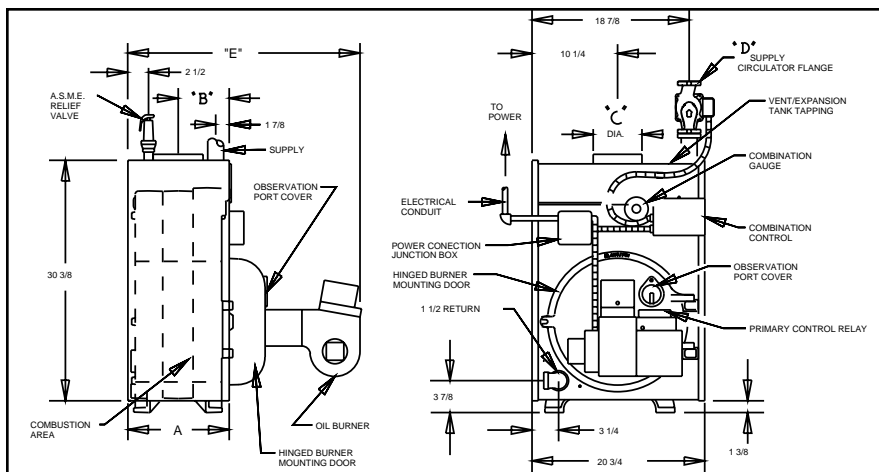
‡ Nominal clay tile liner dimensions.

§ Boiler models XL-30 and larger have two firing rates. The boiler is factory shipped at the lower firing rate. To obtain the higher firing rate, refer to the XL-2000 boiler installation instructions for the appropriate field adjustments.

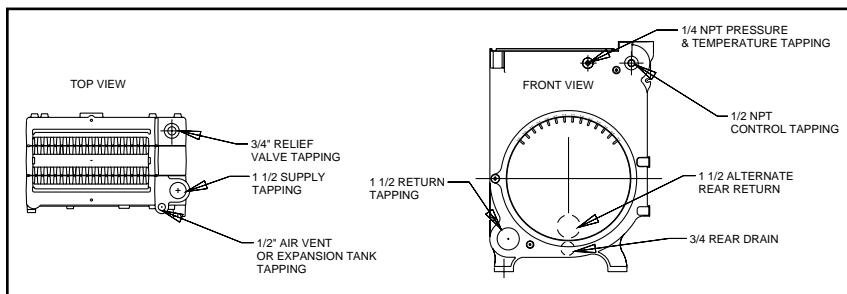
¶ Oblong flue collar. Fits 6" dia. vent connectors.

NOTE: All boilers under 300,000 Btu/h input are tested and rated for capacity under the U.S. Department of Energy (D.O.E.) Test Procedures for Boilers.

All measurements shown in inches.



## Tappings and Openings



## Standard Equipment

- Pre-assembled cast-iron heat exchanger
  - Jacket with insulation
  - Combustion chamber (burner mounting plate insulation and target wall)
  - Pressure and temperature gauge
  - Pressure relief valve (ASME) (in carton)\*
  - Flame retention oil burner with nozzle, primary relay and cadmium sulfide flame detector
  - Circulator, Taco 007, with 1<sup>1</sup>/<sub>4</sub>" flange (XL-20 through XL-40), 1<sup>1</sup>/<sub>2</sub>" flange (XL-50)
  - Draft regulator (in carton)
  - Drain cock (in carton)
  - Flue brush (in carton)
  - Combination hi-limit control and circulator relay
  - Circulator inlet flange/nipple assembly (in carton)
  - Swing-out / removable burner mounting door
  - Swing-up inspection door
- \* "P" boilers are factory equipped with 30 psi ASME relief valves. Boilers are rated for 100 psi and may be ordered with 50 psi or 100 psi relief valves. Consult factory for price.



©Slant/Fin Corp. 1997. Printed in U.S.A. 700. Publication XL-10

Before purchasing this appliance, read important energy cost and efficiency information available from your contractor.

SLANT/FIN CORPORATION, Greenvale, N.Y. 11548 • Phone: (516) 484-2600  
FAX: (516) 484-5921 • Canada: Slant/Fin LTD/LTEE, Mississauga, Ontario

www.slantfin.com